

# Claremont Immersion School PTA Enrollment Discussion

01 November 2016

# What needs to be done? And Why?

- The total enrollment at the Claremont Immersion School needs to contract.
  - CIS has the largest seat deficit (163) of any elementary school.
- Revise the APS enrollment policy (25-2.2) to modify the Claremont cluster provision, which guarantees admission to three schools.
  - There is no way to reduce enrollment and still maintain the current Cluster guarantees.

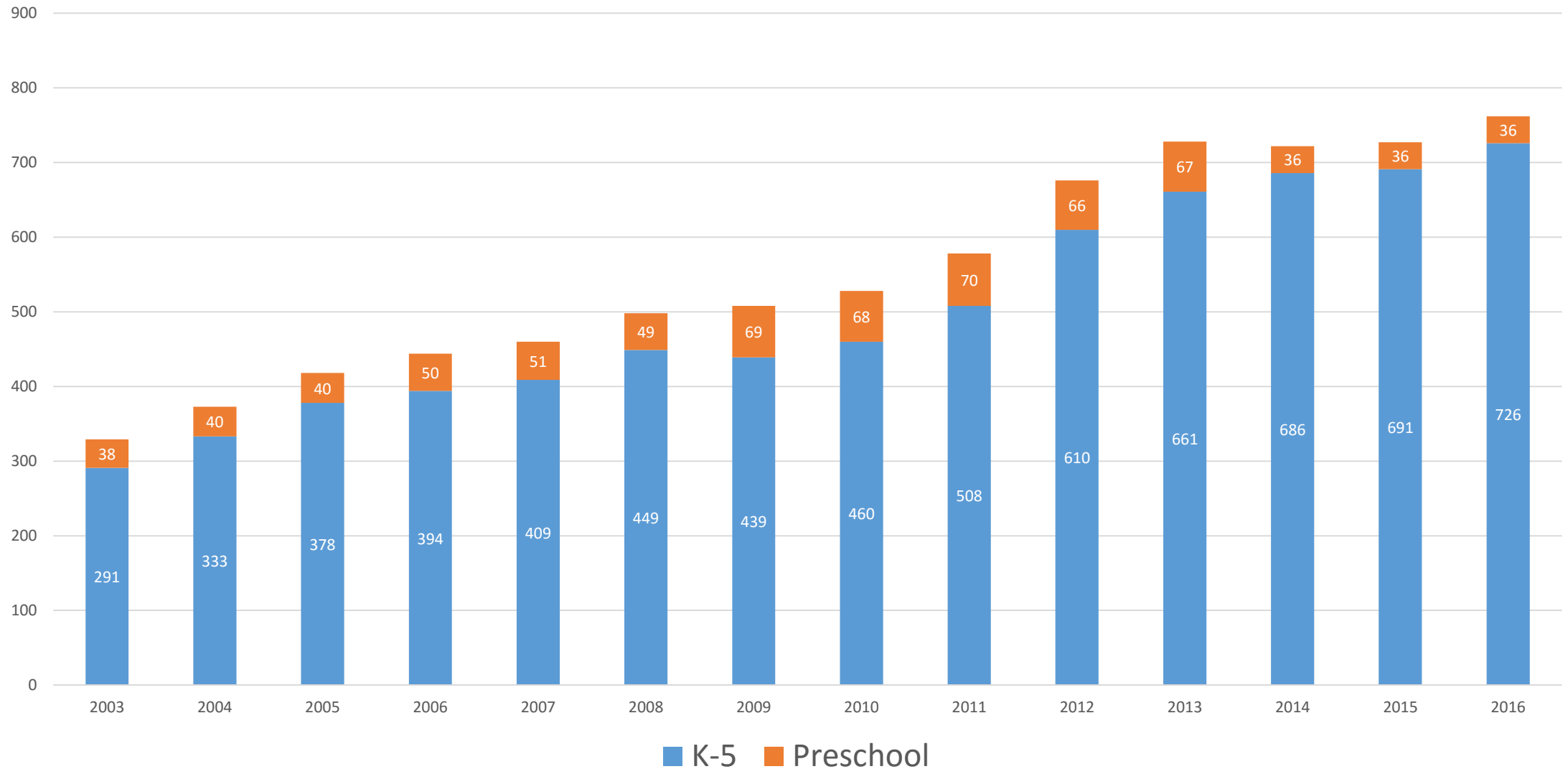
# Guiding Thoughts

- The burdens created by the enrollment increases in APS should be shared. No one group or school should shoulder a disproportionate burden.
- Sustainable enrollment contraction at CIS is not possible without changes to the enrollment policy, specifically the guarantees to the Claremont cluster.
- Consistent with other APS elementary schools, siblings of concurrently enrolled students should receive the highest priority for admission, going forward.
- CIS (along with Key) is meant to serve all of APS. Fair access for all feeder schools is imperative and helps ensure the diversity of the school enrollment.
- The guarantees afforded to the Claremont cluster were not meant to be in perpetuity when they were originally created.

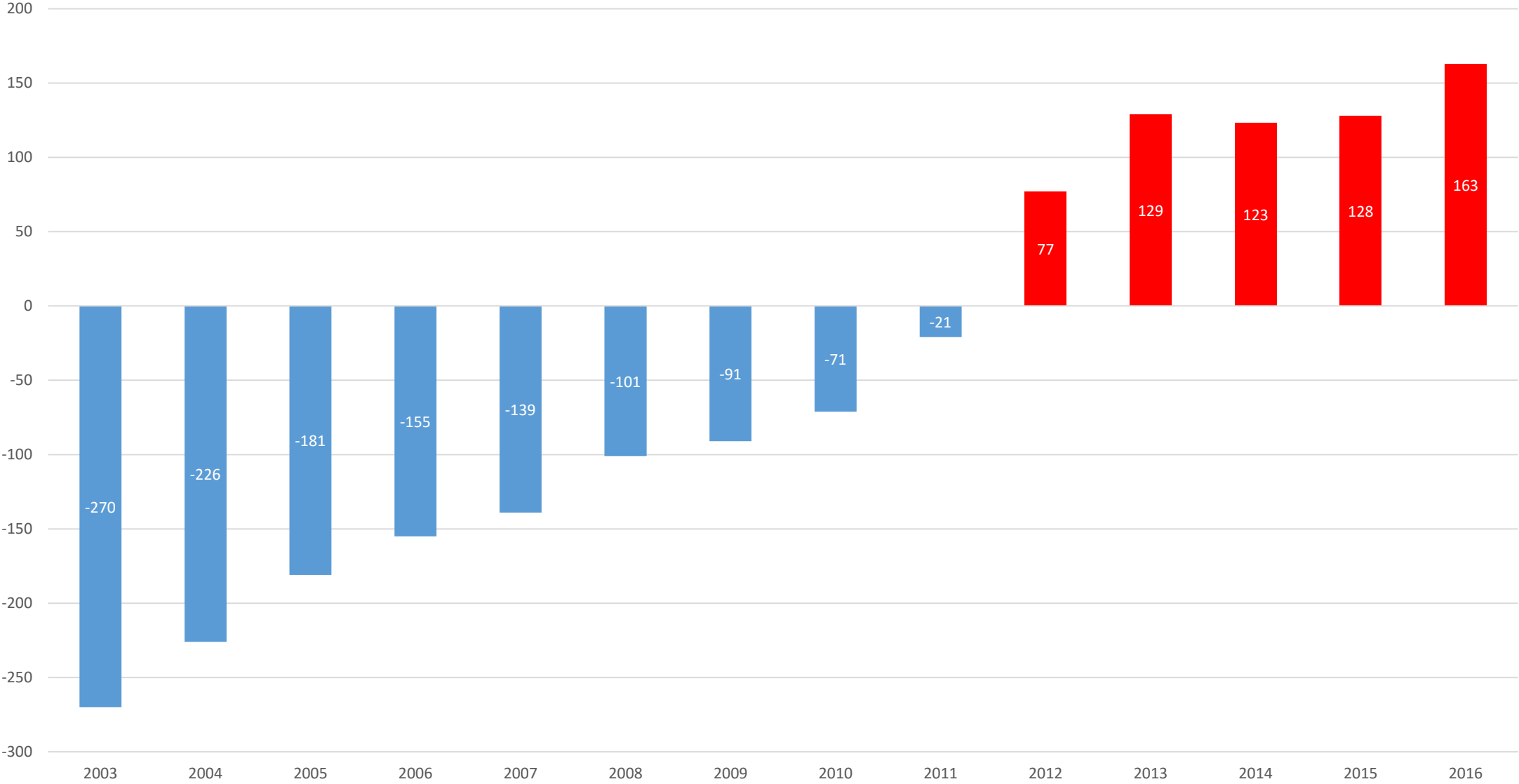
# Background

- The Claremont Immersion School (CIS) is one of two Spanish immersion choice schools in Arlington Public Schools (APS). CIS is meant to serve roughly half of the elementary school districts in APS.
- Over the past few years, CIS enrollment has grown far in excess of its capacity.
- In SY2016, CIS became the second largest elementary school in Arlington and now has the largest seat deficit (163) of any elementary school.
- The excessive enrollment at CIS has been driven primarily by two factors:
  - an APS-wide increase in enrollment.
  - an enrollment policy that guarantees admission to a set of three feeder schools, known as the Claremont Cluster.

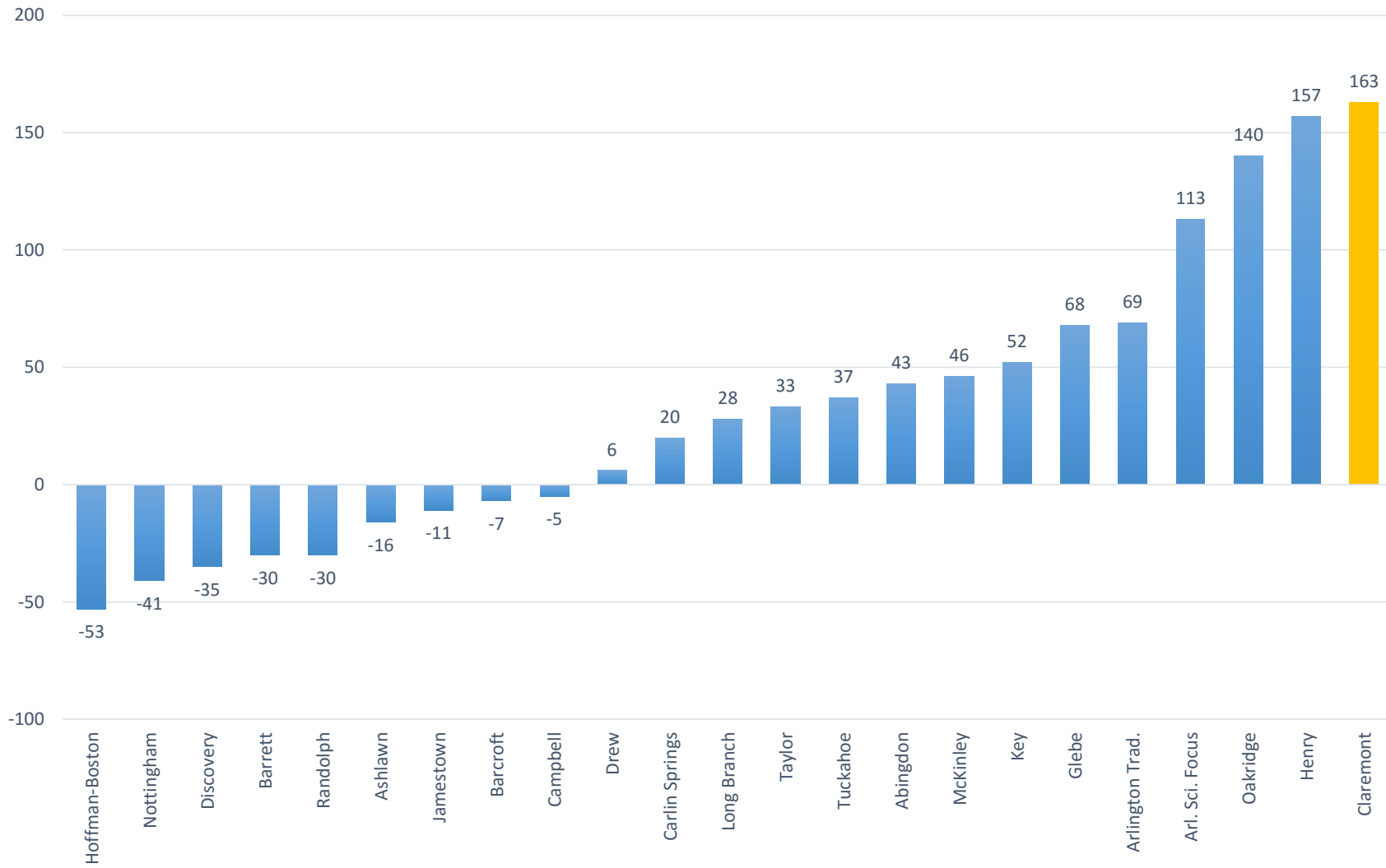
# CIS - Total Enrollment (SY2003-SY2016)



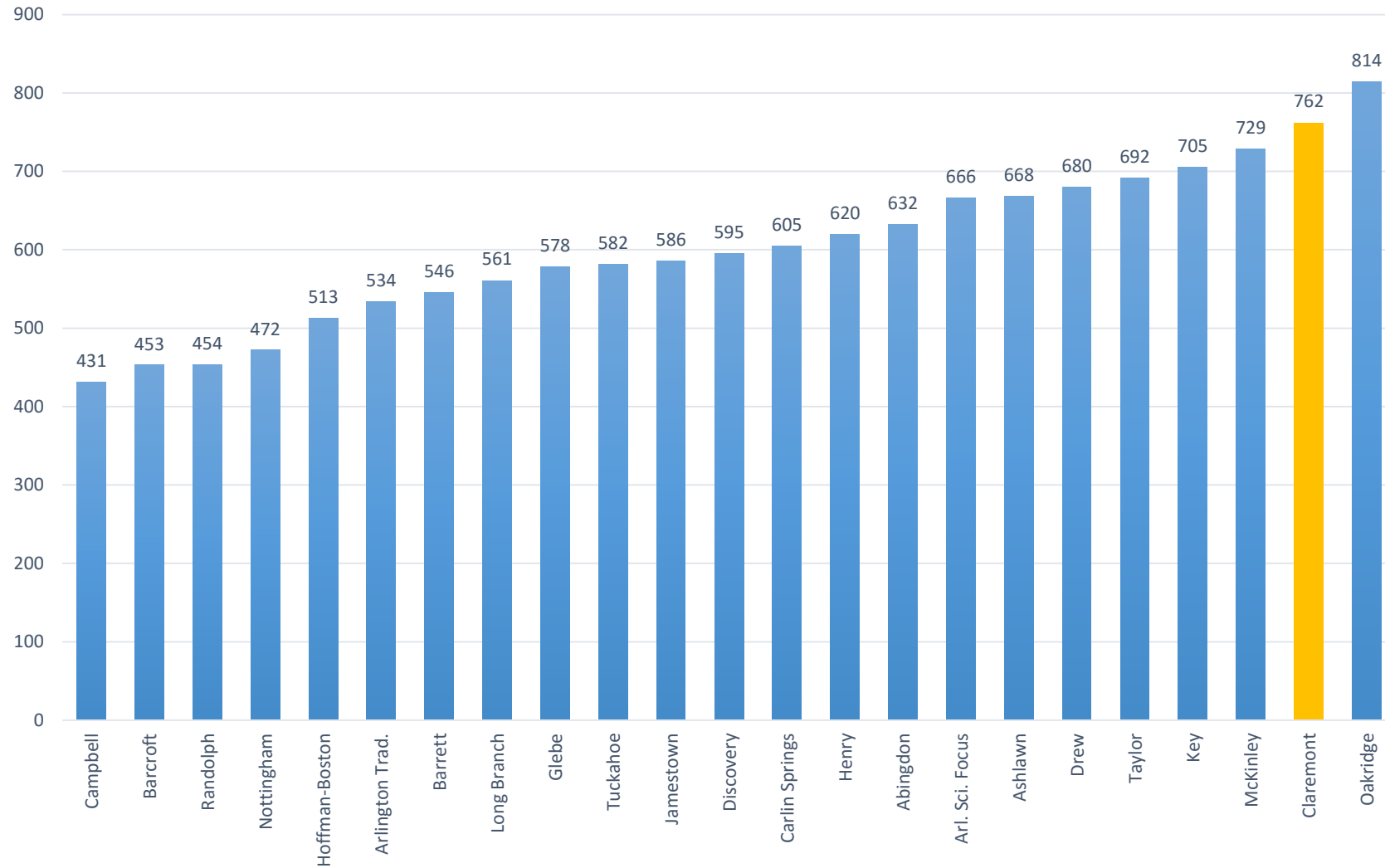
# CIS - Seat Deficits (SY2003-SY2016)



### APS Elementary Schools (SY2016) - Seat Deficits

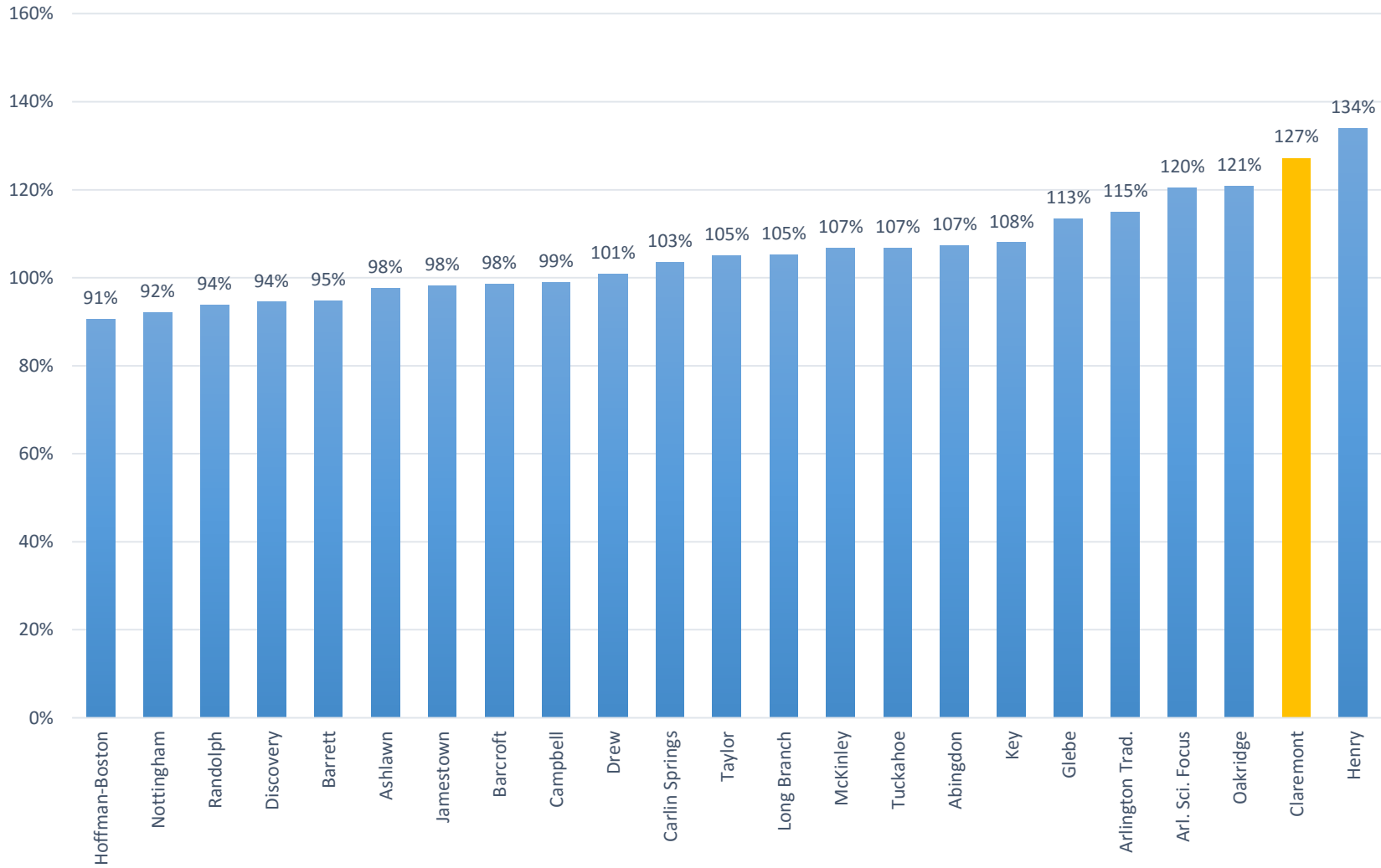


## APS Elementary Schools (SY2016) - Total Enrollment





## APS Elementary Schools (SY2016) - Utilization Percentage



# What needs to be done? And How?

- The total enrollment at the Claremont Immersion School needs to contract.
  - Cap the SY2017 Kindergarten Class at four classes (96 students).
- Revise the APS enrollment policy (25-2.2) to modify the Claremont cluster provision, which guarantees admission to three schools.
  - Request a one-year waiver to “Claremont Cluster” provision.

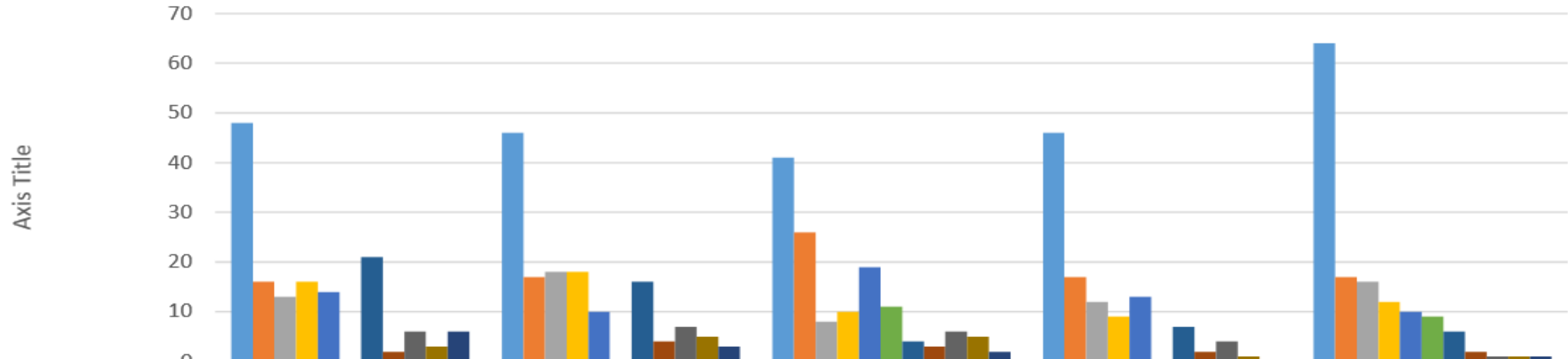
# What will that do?

- Reduce the seat deficit (and begin to address the issued created by the excessive growth).
- Protect Sibling (and VPI) Preferences.
- Restore Fair Access for Feeder Schools.

# Why is this necessary?

- CIS is an outlier in terms of excessive enrollment.
  - CIS has the highest seat deficit (163) of any elementary school in APS (and is projected to exceed 180 in SY2017).
  - CIS has the second highest enrollment (762) of any elementary school in APS.
  - CIS has the second highest utilization percentage (127%) of any elementary school in APS (and has exceeded 120% for four consecutive years).
- Excessive enrollment has put a disproportionate and unsustainable burden on the school.
  - Elementary school experience.
  - Feeder school access and diversity.
  - Safety.
- CIS is unable to accommodate additional temporary capacity to help manage excessive enrollment.

## CIS - Kindergarten Enrollment by Sending School SY2012 - SY2016



	1	2	3	4	5
Abingdon	48	46	41	46	64
Oakridge	16	17	26	17	17
Carlin Springs	13	18	8	12	16
Randolph	16	18	10	9	12
Barcroft	14	10	19	13	10
Drew	0	0	11	0	9
Hoffman-Boston	21	16	4	7	6
Nottingham	2	4	3	2	2
Ashlawn	6	7	6	4	1
McKinley	3	5	5	1	1
Tuckahoe	6	3	2	0	1

# CIS – Kindergarten Enrollment by Sending School

Sending School	SY2012	SY2013	SY2014	SY2015	SY2016
Abingdon	48	46	41	46	64
Oakridge	16	17	26	17	17
Carlin Springs	13	18	8	12	16
Randolph	16	18	10	9	12
Barcroft	14	10	19	13	10
Drew	0	0	11	0	9
Hoffman-Boston	21	16	4	7	6
Nottingham	2	4	3	2	2
Ashlawn	6	7	6	4	1
McKinley	3	5	5	1	1
Tuckahoe	6	3	2	0	1
Arl. Sci. Focus	0	0	0	0	0
Arlington Trad.	0	0	0	0	0
Barrett	1	2	0	0	0
Campbell	0	0	0	0	0
Discovery	0	0	0	0	0
Glebe	0	0	0	0	0
Henry	1	0	2	0	0
Jamestown	1	0	0	0	0
Key	0	0	0	0	0
Long Branch	1	0	1	0	0
Taylor	0	0	0	0	0
Out of District	1	0	0	0	0
<b>Total</b>	<b>149</b>	<b>146</b>	<b>138</b>	<b>111</b>	<b>139</b>
<b>Cluster Total</b>	<b>85</b>	<b>79</b>	<b>71</b>	<b>70</b>	<b>87</b>
<b>Non-cluster Total</b>	<b>64</b>	<b>67</b>	<b>67</b>	<b>41</b>	<b>52</b>

## APS Enrollment Policy (25-2.2) excerpt:

### **Claremont and Key Immersion Elementary Schools**

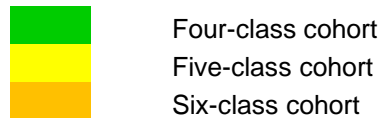
Claremont and Key Elementary Immersion Schools strive to maintain a balance of approximately 50 percent native Spanish-speaking (or Spanish-dominant) and 50 percent native English-speaking (or English-dominant) students and base admission in the upper grades on staff analysis of language proficiency and balance as well as space availability. The application of such a policy does not exclude students whose first or dominant language may be other than English or Spanish (e.g., Chinese, Urdu, and Arabic). Such students are included in the English speaking category.

Students in the preschool programs located at Claremont or Key have the option to remain at Claremont or Key without having to enter the kindergarten level lottery. **Students residing in Neighborhood (Key/Science Focus) for Key or the Cluster (Abingdon/Hoffman-Boston /Oakridge) for Claremont are guaranteed admission to that school.** Admission to Claremont and Key Elementary Immersion Schools will be offered to others in the following order:

- Siblings of older students who will be concurrently attending Claremont or Key
- In the case of Key, students from its team (Jamestown and Taylor) schools
- Students who live within Claremont and Key's identified boundaries
- Students from one school's waiting list if space is available in the other school

# CIS – Historical Enrollment

	K	1	2	3	4	5	K-5 Total	Preschool Total	Grand Total	% Capacity	Seat Surplus/Deficit
2003 Actual	84	65	50	42	26	24	291	38	329	54.92%	270
2004 Actual	88	84	61	40	39	21	333	40	373	62.27%	226
2005 Actual	102	76	80	57	29	34	378	40	418	69.78%	181
2006 Actual	85	98	67	70	46	28	394	50	444	74.12%	155
2007 Actual	89	71	87	58	63	41	409	51	460	76.79%	139
2008 Actual	104	85	64	79	57	60	449	49	498	83.14%	101
2009 Actual	98	92	71	50	73	55	439	69	508	84.81%	91
2010 Actual	105	90	81	66	49	69	460	68	528	88.15%	71
2011 Actual	132	102	85	80	65	44	508	70	578	96.49%	21
2012 Actual	150	132	98	82	84	64	610	66	676	112.85%	-77
2013 Actual	146	133	122	98	82	80	661	67	728	121.54%	-129
2014 Actual	138	142	124	112	91	79	686	36	722	120.53%	-123
2015 Actual	111	133	134	122	105	86	691	36	727	121.37%	-128
2016 Actual	139	105	129	134	111	108	726	36	762	127.21%	-163
2017 Projected	144	135	101	125	130	107	742	36	778	129.88%	-179
2018 Projected	144	140	131	97	121	126	759	36	795	132.72%	-196
2019 Projected	144	140	136	127	93	117	757	36	793	132.39%	-194
2020 Projected	144	140	136	132	123	89	764	36	800	133.56%	-201



Projected numbers

All data is based upon September 30<sup>th</sup> reporting for the year.